

iLEMBE

**PR**  **CAST** (Pty) Ltd

**PRODUCT CATALOGUE VERSION 4.16**

BRICKS | BLOCKS | PAVERS | PALISADES

## COMMON BRICK



### COMMON BRICK

<b>DIMENSIONS</b>	210(L) x 70(W) x 100mm (H)
<b>COVERAGE</b>	55/m <sup>2</sup>
<b>STRENGTH</b>	7MPa / 10,5Mpa / 14MPa
<b>WEIGHT</b>	3,1kg
<b>COLOURS</b>	Grey

## MAXI BRICK SOLID



### MAXI BRICK SOLID

<b>DIMENSIONS</b>	220(L) x 90(W) x 110(H)
<b>COVERAGE</b>	45/m <sup>2</sup>
<b>STRENGTH</b>	3,5MPa / 7,0MPa
<b>WEIGHT</b>	4,7kg
<b>COLOURS</b>	Grey

## MAXI BRICK HOLLOW



### MAXI BRICK HOLLOW

<b>DIMENSIONS</b>	220(L) x 90(W) x 110(H)
<b>COVERAGE</b>	45/m <sup>2</sup>
<b>STRENGTH</b>	3,5MPa / 7,0MPa
<b>WEIGHT</b>	3,75kg
<b>COLOURS</b>	Grey

## M100 BLOCK



### M100 BLOCK

<b>DIMENSIONS</b>	390(L) x 90(W) x 190(H)
<b>COVERAGE</b>	12,5/m <sup>2</sup>
<b>STRENGTH</b>	N/A
<b>WEIGHT</b>	10.5kg
<b>COLOURS</b>	Grey

## M150 BLOCK



### M150 BLOCK

<b>DIMENSIONS</b>	390(L) x 140(W) x 190(H)
<b>COVERAGE</b>	12,5/m <sup>2</sup>
<b>STRENGTH</b>	3,5MPa or 7MPa
<b>WEIGHT</b>	14,5kg
<b>COLOURS</b>	Grey

## GREENLOCK™ RETAINER



### GREENLOCK RETAINING BLOCK

<b>DIMENSIONS</b>	380(L) x 320(W) x 220mm(H)
<b>COVERAGE</b>	12/m <sup>2</sup>
<b>STRENGTH</b>	14 MPa
<b>WEIGHT</b>	27kg
<b>COLOURS</b>	Grey, Tan

## GREENLOCK™ RETAINER L7



### GREENLOCK L7 RETAINING BLOCK

<b>DIMENSIONS</b>	380(L) x 395(W) x 220mm(H)
<b>COVERAGE</b>	7,5/m <sup>2</sup>
<b>STRENGTH</b>	14MPa
<b>WEIGHT</b>	38kg
<b>COLOURS</b>	Grey, Tan

## GREENLOCK™ RETAINING SLIDER L7



### GREENLOCK L7 RETAINING BLOCK

<b>DIMENSIONS</b>	225(L) x 80(W) x 208mm(H)
<b>COVERAGE</b>	225 mm between full block
<b>STRENGTH</b>	N/A
<b>WEIGHT</b>	6.6kg
<b>COLOURS</b>	Grey, Tan

## AIRVENT BLOCK



### AIRVENT BLOCK

<b>DIMENSIONS</b>	220(L) x 155(W) x 50(H)
-------------------	-------------------------

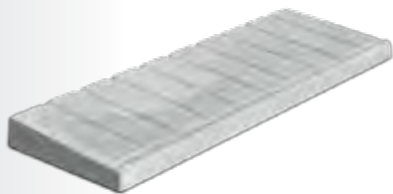
<b>COVERAGE</b>	N/A
-----------------	-----

<b>STRENGTH</b>	
-----------------	--

<b>WEIGHT</b>	2,1kg
---------------	-------

<b>COLOURS</b>	Grey
----------------	------

## WINDOWSILL



### WINDOWSILL

<b>DIMENSIONS</b>	490(L) x 180(W) x 35(H)
-------------------	-------------------------

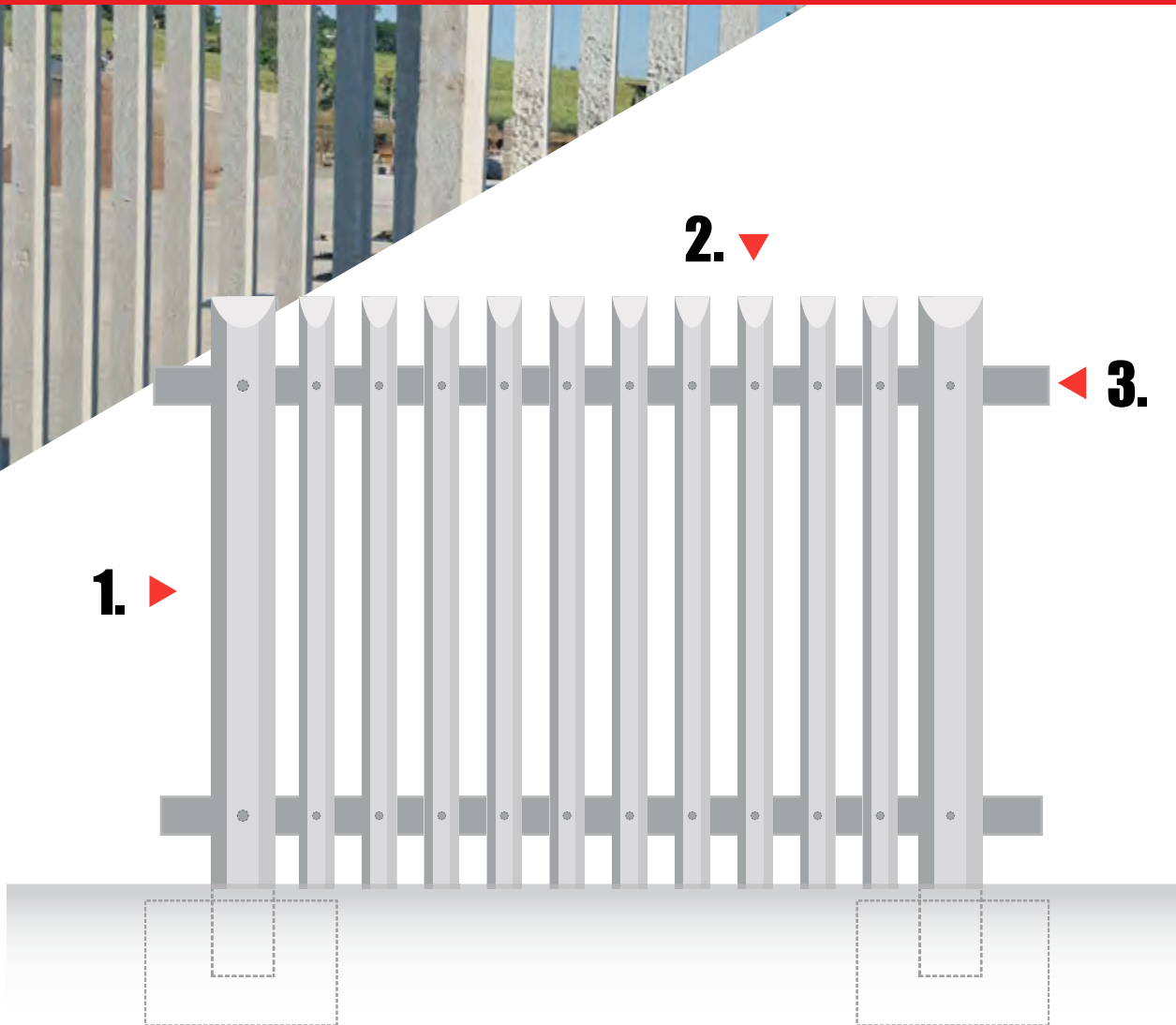
<b>COVERAGE</b>	N/A
-----------------	-----

<b>STRENGTH</b>	
-----------------	--

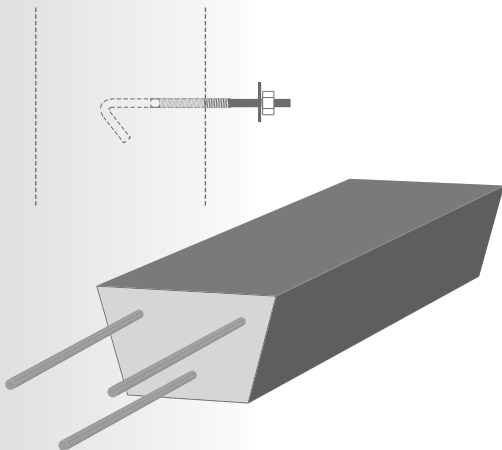
<b>WEIGHT</b>	6,25kg
---------------	--------

<b>COLOURS</b>	Grey
----------------	------

## HEAVY DUTY SPEC.



## PALISADE FENCING SPEC.



### PALISADE FENCING SPECS

Galvanised hook bolt detail

10 pales per section

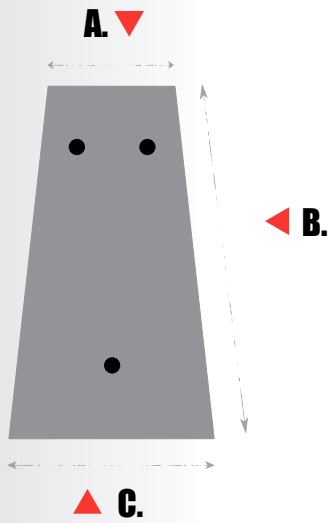
Concrete strength - 30 Mpa 28 days

Reinforcing has minimum of 15mm cover

Mass / meter length of Fencing 292kg

Opening between pales 79mm

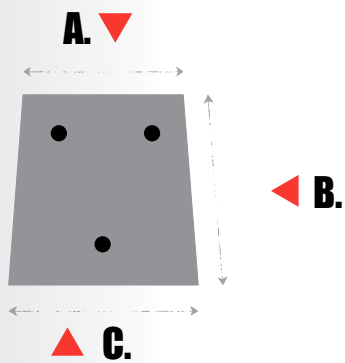
## POLES (Fig.1)



### PALISADE POLE

OVERALL LENGTH	3000mm
FRONT FACE (A.)	80mm
WIDTH (B.)	225mm
REAR FACE (C.)	130mm
RE-INFORCING	3 x R8 Bars
MASS	TBC

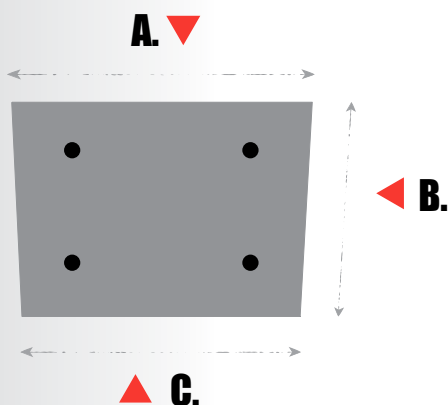
## PALES (Fig.2)



### PALISADE PALE

OVERALL LENGTH	2400mm
FRONT FACE (A.)	80mm
WIDTH (B.)	75mm
REAR FACE (C.)	95mm
RE-INFORCING	3 x R8 Bars
MASS	TBC

## RAIL / CROSS BAR (Fig.3)



### PALISADE POLE

OVERALL LENGTH	2000mm
FRONT FACE (A.)	155mm
WIDTH (B.)	85mm
REAR FACE (C.)	150mm
RE-INFORCING	3 x R8 Bars
MASS	TBC

## 110mm COBBLE PAVER



### 110 x 110 COBBLE PAVER

**DIMENSIONS** 110(L) x 110(W) x 50mm (H)

**COVERAGE** 92/m<sup>2</sup>

**STRENGTH** 25MPa

**WEIGHT** 2,1kg

**COLOURS** Charcoal, Grey, Autumn, Tan



## 150mm COBBLE PAVER



### 150 x 150 COBBLE PAVER

**DIMENSIONS** 150(L) x 150(W) x 50mm (H)

**COVERAGE** 44,2/m<sup>2</sup>

**STRENGTH** 25MPa

**WEIGHT** 2,5kg

**COLOURS** Charcoal, Grey, Autumn, Tan



## 200mm SLATE PAVER



### 200 x 200 COBBLE PAVER

**DIMENSIONS** 200(L) x 200(W) x 50mm (H)

**COVERAGE** 25/m<sup>2</sup>

**STRENGTH** 25MPa

**WEIGHT** 3,5kg

**COLOURS** Charcoal, Grey, Autumn, Tan





## 400 FLAGSTONE



### 400 x 400 FLAGSTONE

<b>DIMENSIONS</b>	400(L) x 400(W) x 50mm(H)
<b>COVERAGE</b>	6,25/m <sup>2</sup>
<b>STRENGTH</b>	25MPa
<b>WEIGHT</b>	16.1kg
<b>COLOURS</b>	Charcoal, Grey, Autumn, Tan



## 400 x 200 FLAGSTONE



### 400 x 200 FLAGSTONE

<b>DIMENSIONS</b>	400(L) x 200(W) x 50mm(H)
<b>COVERAGE</b>	12,5/m <sup>2</sup>
<b>STRENGTH</b>	25MPa
<b>WEIGHT</b>	9kg
<b>COLOURS</b>	Charcoal, Grey, Autumn, Tan



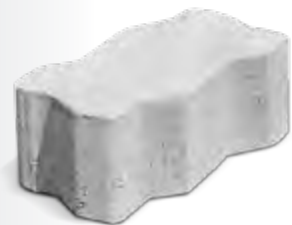
## 60mm INTERLOCKING PAVER



### 60mm INTERLOCKING PAVER

<b>DIMENSIONS</b>	200(L) x 100(W) x 60mm(H)
<b>COVERAGE</b>	50/m <sup>2</sup>
<b>STRENGTH</b>	25MPa / 30MPa
<b>WEIGHT</b>	2,5kg
<b>COLOURS</b>	Grey

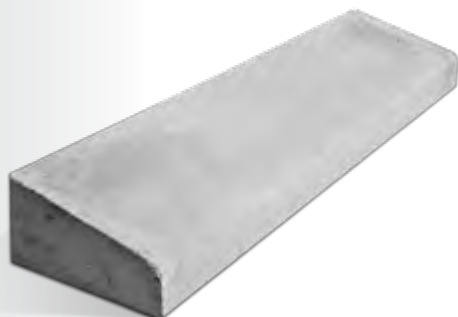
## 80mm INTERLOCKING PAVER (Indust.)



### 80mm INTERLOCKING PAVER

<b>DIMENSIONS</b>	200(L) x 100(W) x 80mm(H)
<b>COVERAGE</b>	50/ m <sup>2</sup>
<b>STRENGTH</b>	25MPa / 30MPa
<b>WEIGHT</b>	3,5kg
<b>COLOURS</b>	Grey

## KERB STONE 'MOUNTABLE' (Fig.6)



### KERB STONE REGULAR

<b>DIMENSIONS</b>	1000(L) x 230(W) x 120(H) x 55(at nose)
<b>COVERAGE</b>	N/A
<b>STRENGTH</b>	50MPa
<b>WEIGHT</b>	52kg
<b>COLOURS</b>	Grey

## KERB STONE MINI 'MOUNTABLE'



### KERB STONE MINI

<b>DIMENSIONS</b>	700(L) x 90(W) x 120(H) x 55(at nose)
<b>COVERAGE</b>	N/A
<b>STRENGTH</b>	52MPa
<b>WEIGHT</b>	22kg
<b>COLOURS</b>	Grey